

**RP**

**ACCESSORY**



**LONG REACTION ARM**

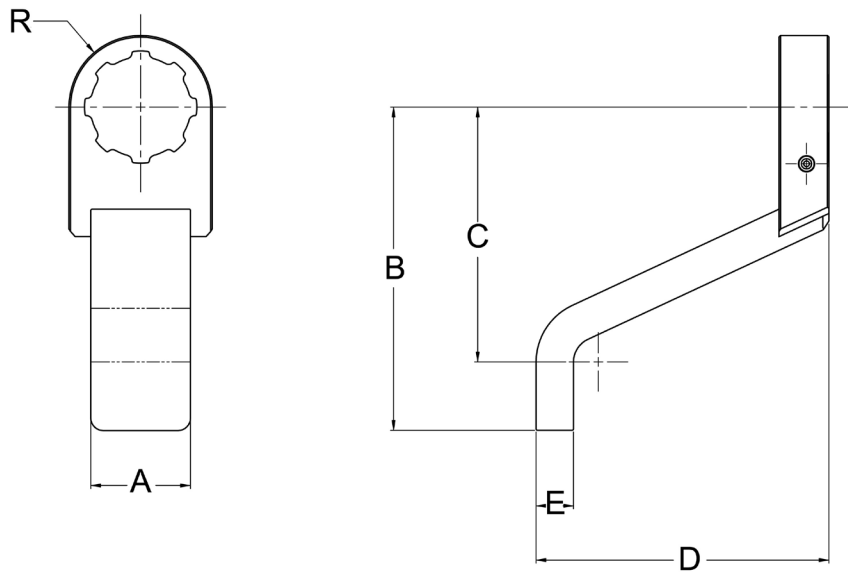
RP Raptor Series

Pneumatic Torque Wrench Accessory

**UP**  
*torque*

## RP Raptor Series Pneumatic Torque Wrench - Long Reaction Arm

MODEL NUMBER	PART NUMBER	A	B	C	D	E	R
RP-500	RPA-05.10-LARM in	1.50	5.50	4.36	5.63	.63	1.25
RP-500	RPA-05.10-LARM mm	38.1	139.7	110.7	143.0	16.0	31.8
RP-1000 3/4" DRIVE	RPA-05.10-LARM in	1.50	5.50	4.36	5.63	.63	1.25
RP-1000 3/4" DRIVE	RPA-05.10-LARM mm	38.1	139.7	110.7	143.0	16.0	31.8
RP-1000 1" DRIVE	RPA-20.30-LARM in	2.00	6.50	5.12	5.88	.75	1.75
RP-1000 1" DRIVE	RPA-20.30-LARM mm	50.8	165.1	130.0	149.4	19.05	44.4
RP-2000	RPA-20.30-LARM in	2.00	6.50	5.12	5.88	.75	1.75
RP-2000	RPA-20.30-LARM mm	50.8	165.1	130.0	149.4	19.05	44.4
RP-3000	RPA-20.30-LARM in	2.00	6.50	5.12	5.88	.75	1.75
RP-3000	RPA-20.30-LARM mm	50.8	165.1	130.0	149.4	19.05	44.4
RP-6000	RPA-60-LARM in	2.25	8.00	5.00	8.25	1.00	2.00
RP-6000	RPA-60-LARM mm	57.2	203.2	127.0	209.6	25.4	50.8



### RP Raptor Series - Long Reaction Arm

This arm provides a longer reach for reaction point. It works with deepwell sockets.

