

RP

ACCESSORY

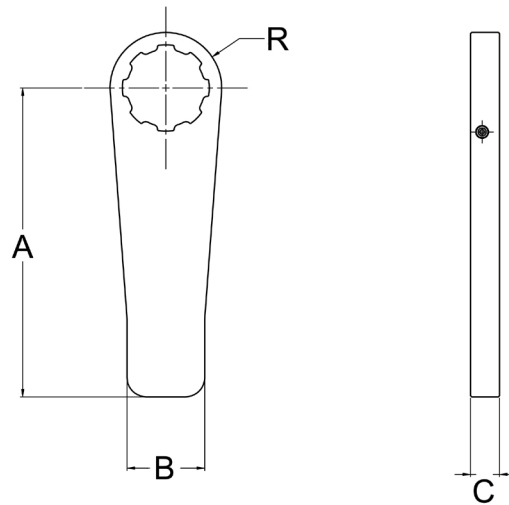


STRAIGHT REACTION ARM
RP Raptor Series
Pneumatic Torque Wrench Accessory

UP
torque

RP Raptor Series Pneumatic Torque Wrench - Straight Reaction Arm

MODEL NUMBER	PART NUMBER	A	B	C	R
RP-500	RPA-05.10-SARM in	6.00	1.25	.63	1.25
RP-500	RPA-05.10-SARM mm	152.4	31.8	16.0	31.8
RP-1000 3/4" DRIVE	RPA-05.10-SARM in	6.00	1.25	.63	1.25
RP-1000 3/4" DRIVE	RPA-05.10-SARM mm	152.4	31.8	16.0	31.8
RP-1000 1" DRIVE	RPA-20.30-SARM in	8.00	2.00	.75	1.44
RP-1000 1" DRIVE	RPA-20.30-SARM mm	203.2	50.8	19.1	36.6
RP-2000	RPA-20.30-SARM in	8.00	2.00	.75	1.44
RP-2000	RPA-20.30-SARM mm	203.2	50.8	19.1	36.6
RP-3000	RPA-20.30-SARM in	8.00	2.00	.75	1.44
RP-3000	RPA-20.30-SARM mm	203.2	50.8	19.1	36.6
RP-6000	RPA-60-SARM in	10.00	2.25	1.25	2.00
RP-6000	RPA-60-SARM mm	254	57.15	31.8	50.8



RP Raptor Series - Straight Reaction Arm

This arm is designed to accommodate a reaction point at a 90 degree angle from the drive.

