

RP

ACCESSORY

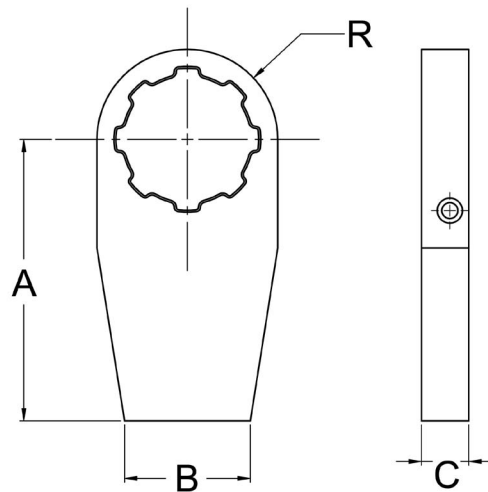


WELD BLANK
RP Raptor Series
Pneumatic Torque Wrench Accessory

UP
torcui™

RP Raptor Series Pneumatic Torque Wrench - Weld Blank

MODEL NUMBER	PART NUMBER	A	B	C	R
RP-500	RPA-05.10-WD in	4.50	1.50	.75	1.25
RP-500	RPA-05.10-WD mm	114.3	38.1	19.05	31.75
RP-1000 3/4" DRIVE	RPA-05.10-WD in	4.50	1.50	.75	1.25
RP-1000 3/4" DRIVE	RPA-05.10-WD mm	114.3	38.1	19.05	31.75
RP-1000 1" DRIVE	RPA-20.30-WD in	4.50	2.00	1.00	1.43
RP-1000 1" DRIVE	RPA-20.30-WD mm	114.3	50.8	25.40	36.3
RP-2000	RPA-20.30-WD in	4.50	2.00	1.00	1.43
RP-2000	RPA-20.30-WD mm	114.3	50.8	25.40	36.3
RP-3000	RPA-20.30-WD in	4.50	2.00	1.00	1.43
RP-3000	RPA-20.30-WD mm	114.3	50.8	25.40	36.3
RP-6000	RPA-60-WD in	6.00	2.25	1.25	2.00
RP-6000	RPA-60-WD mm	152.4	57.2	31.80	50.8



RP Raptor Series - Weld Blank

This reaction arm is made of raw steel and allows the customer to fabricate their own custom arm. The weld blank is splined to fit the RP Series and includes heat treating specifications.

NOTE: Weld disks are not heat treated as provided. Material is 4140-AQ. Final heat treating to 38-42 Rc is required.

